

CHALLENGER

Record serial number

Elite Challenger Elliptical

Thank you for purchasing the **Elite Challenger Elliptical**.

For over 20 years, Elite Fitness™ has been New Zealand's largest supplier of fitness equipment. Our aim and vision is to provide you Elite™ branded products, tested to the highest standard for quality and biomechanics at the best possible price.

Please read through this manual to familiarise yourself with the operation of your new **Elite Challenger Elliptical**. Doing so will help to insure that you get the most out of your machine, enjoying a safe and effective workouts ahead.

Even though we go to great efforts to ensure the quality of each product we produce, occasional errors and or omissions do occur. In any event should you find this product to have either a defective or a missing part, please contact us for a replacement.

SERVICE & WARRANTY

For service and warranty assistance please visit:

www.elitefitness.co.nz/service

Online forms are available for Service, Warranty and Parts requests.

(09) 258 9067

Elite Fitness HQ

11 George Bourke Drive

Mt Wellington

Auckland, New Zealand

info@elitefitness.co.nz

0800 2 438 348

CONTENTS

Important Safety Instructions	3	Limited Warranty	25
Product Specifications	4	Warm-Up Exercise	26
Assembly Instructions	5	Training Stages	27
User Instructions	20	Parts List	28
Care and Maintenance	23	Exploded Drawing	30
Maintenance Log	24	Notes	31

IMPORTANT SAFETY INSTRUCTIONS

The following definition applied to the word “WARNING” when used in this manual:



Used to call attention to POTENTIAL hazards that could result in personal injury or loss of life.

READ ALL INSTRUCTIONS BEFORE USING THE MACHINE

This product has been designed for home use only. Product liability and warranty conditions will not be applicable to products being subjected to professional use or products being used in a commercial environment. e.g Gym Centre

This exercise machine is built for optimum safety. However, certain precautions apply whenever you operate a piece of exercise equipment. Be sure read the entire manual before you assemble or operate your machine. In particular, note the following safety precautions.

- Read all instructions in this manual before using this equipment.
- Use the machine only for its intended use as described in this Manual.
- Inspect and tighten all the loose parts before this equipment is used.
- Keeps hands away from moving parts.
- Keep children and pets away from the machine at all time. DO NOT leave children unattended in the same room with the machine.
- Before using the machine to exercise, always do stretching exercises to properly warm up.
- Inspect the machine before each use; make sure all of the connections are tightly secured.
- Only one person at a time should use the machine.
- If the user experiences dizziness, nausea, chest pain, or any other abnormal symptoms, STOP the workout at once. **CONSULT A PHYSICIAN IMMEDIATELY.**
- Position the machine on a clear, levelled surface. DO NOT use the machine near water or outdoors.
- Always wear appropriate workout clothing when exercising. DO NOT wear robes or other clothing that could become caught in the machine. Sporting shoes are recommended when using the machine.
- Do not place any sharp object around the machine.
- Disabled persons should not use the machine without a qualified person or physician in attendance.
- Never operate the machine if the machine is not functioning properly.

- Only carry out training work on the equipment when it is in perfect working order. Only use original spare parts in the event of a repair.
- Do not use strong solvents for cleaning, and only use the tools supplied, or suitable ones of your own, for any repairs that may be required. Please dispose of the packaging and any parts that have to be replaced subsequently (all parts for the unit) at suitable collecting points or containers with a view to saving the environment.
- Not for therapeutic use.

WARNING: Before beginning any exercise program, consult your physician. This is especially important for persons with pre-existing health problems. The seller assumes no responsibility for personal injury or property damage sustained by or through the use of this product.

SERVICE HINTS: The high quality standard of this product only will be kept if you on a regular basis check all screw-connections and moving parts on proper fitting. Damaged parts have to be changed immediately. During the time of repair the product must not be used by anybody.

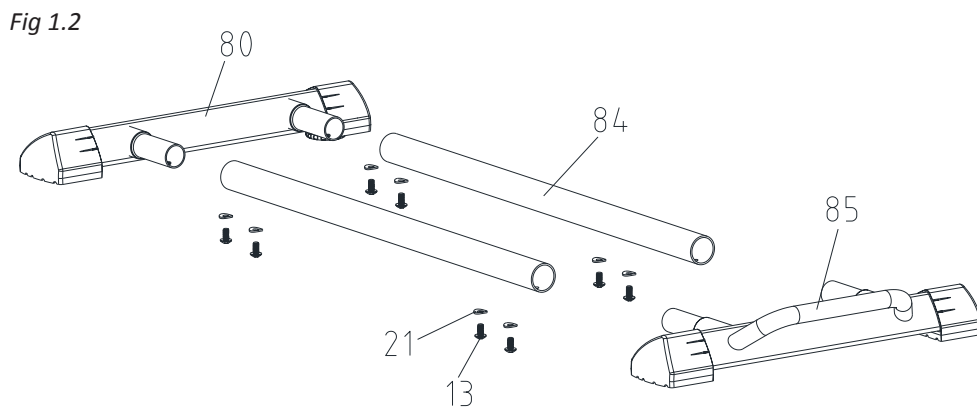
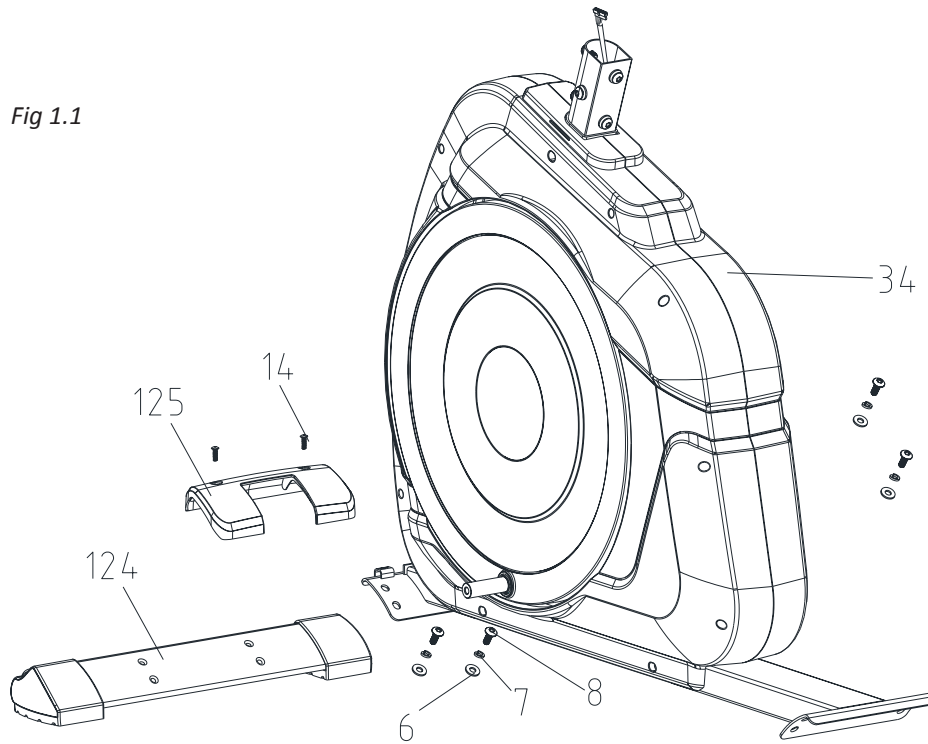
IMPORTANT HINTS:

- A) This product has been tested in accordance with the requirements of EN 957-1/A1, EN 957-5, standard, Class HA (HOME USE). The maximum load is limited to 120KGS.
- B) Parents should be aware of the risk factor of young children playing on fitness equipment unattended. Make sure that the children are instructed properly in the use of the product and in the controlled execution of the different exercise. Misuse of the product could result in serious injury

PRODUCT SPECIFICATIONS

User Weight Capacity:	120kg
Dimensions:	2000x 511 x 1705mm
Shipping Weight:	72kg
Net Weight:	67kg
Power Requirements	6V 1.0A

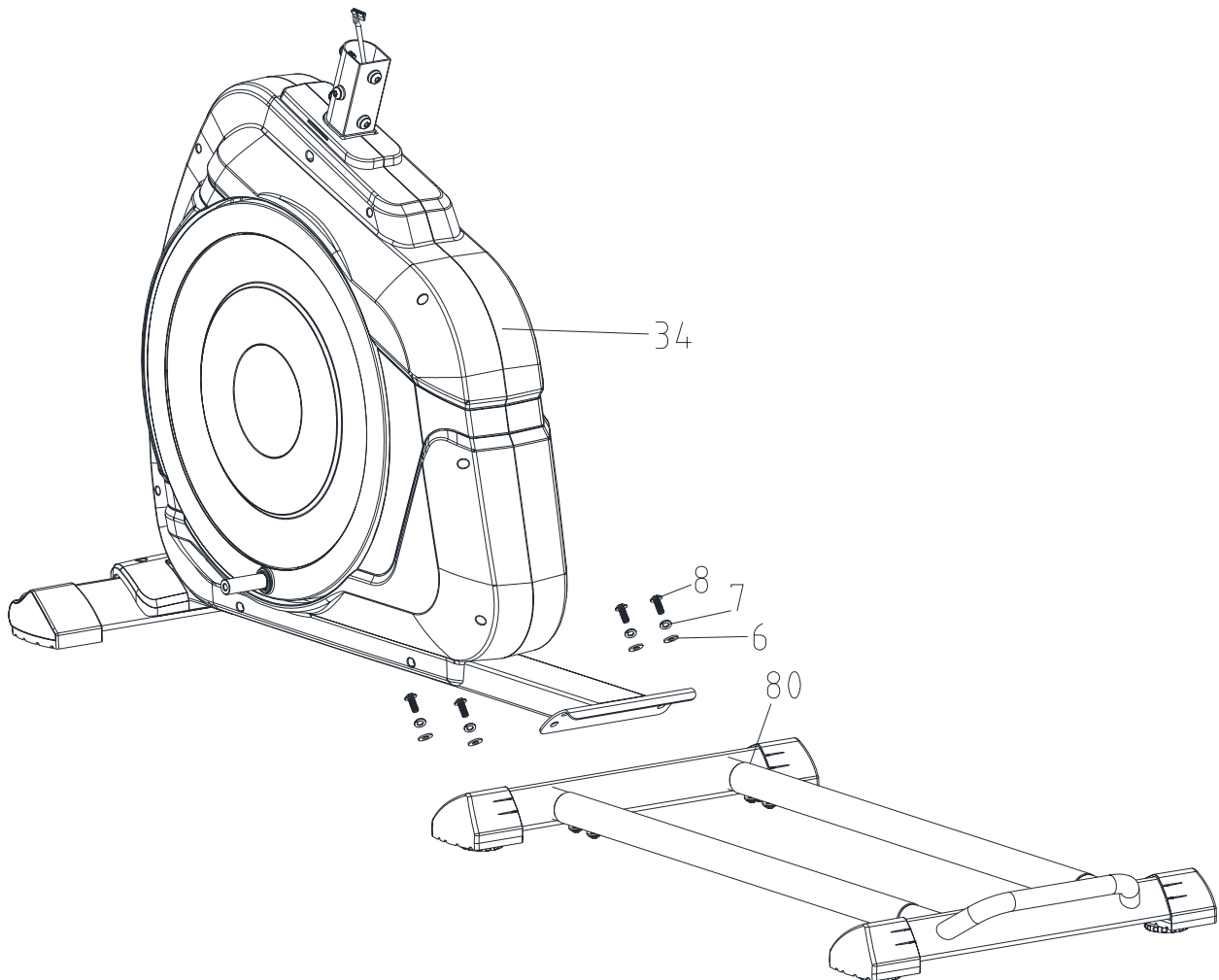
ASSEMBLY INSTRUCTIONS



STEP 1

- Attach the Front Stabiliser (#124) to the Main Frame (#34) using 4 x M8x20 Bolts (#8) 4 x Flat Washers (#6) and 4 x Wave Washers (#7).
- Attach the Front Stabiliser Cover (#125) to the Front Stabiliser (#124) and the Main Frame (#34) using 2 x M5x10 Screws (#14).
- Connect the Middle Stabiliser (#80) to the 2 x Rails (#84) using 4 x M8x16 Bolts (#13) and 4 x Semicircle Washers (#21)
- Connect the Rear Stabiliser (#85) to the other end of the 2 Rails (#84) using 4 x M8x16 Bolts (#13) and 4 x Semicircle Washers (#21).

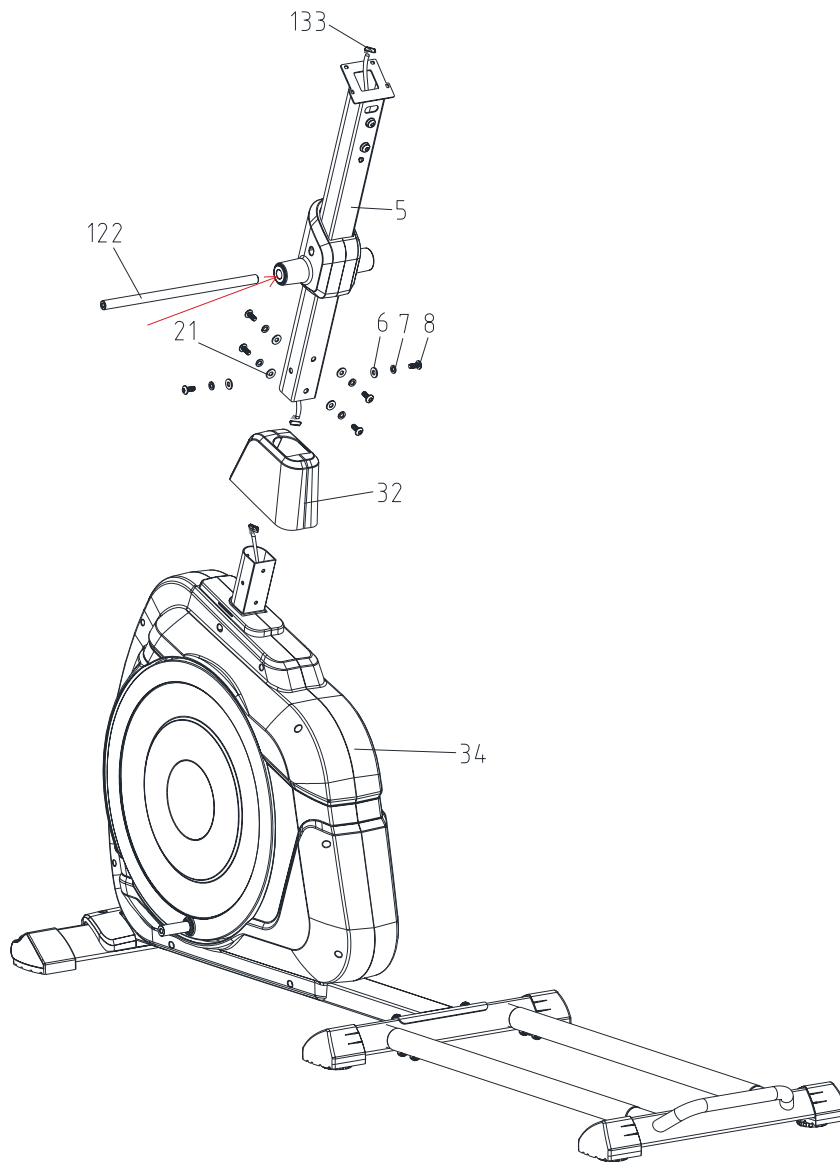
ASSEMBLY INSTRUCTIONS



STEP 2

- Attach the Middle Stabiliser (#80) to the Main frame (#34) using 4 x M8x20 Bolts (#8) 4 x Flat Washers (#6) and 4 x Wave Washers (#7).

ASSEMBLY INSTRUCTIONS

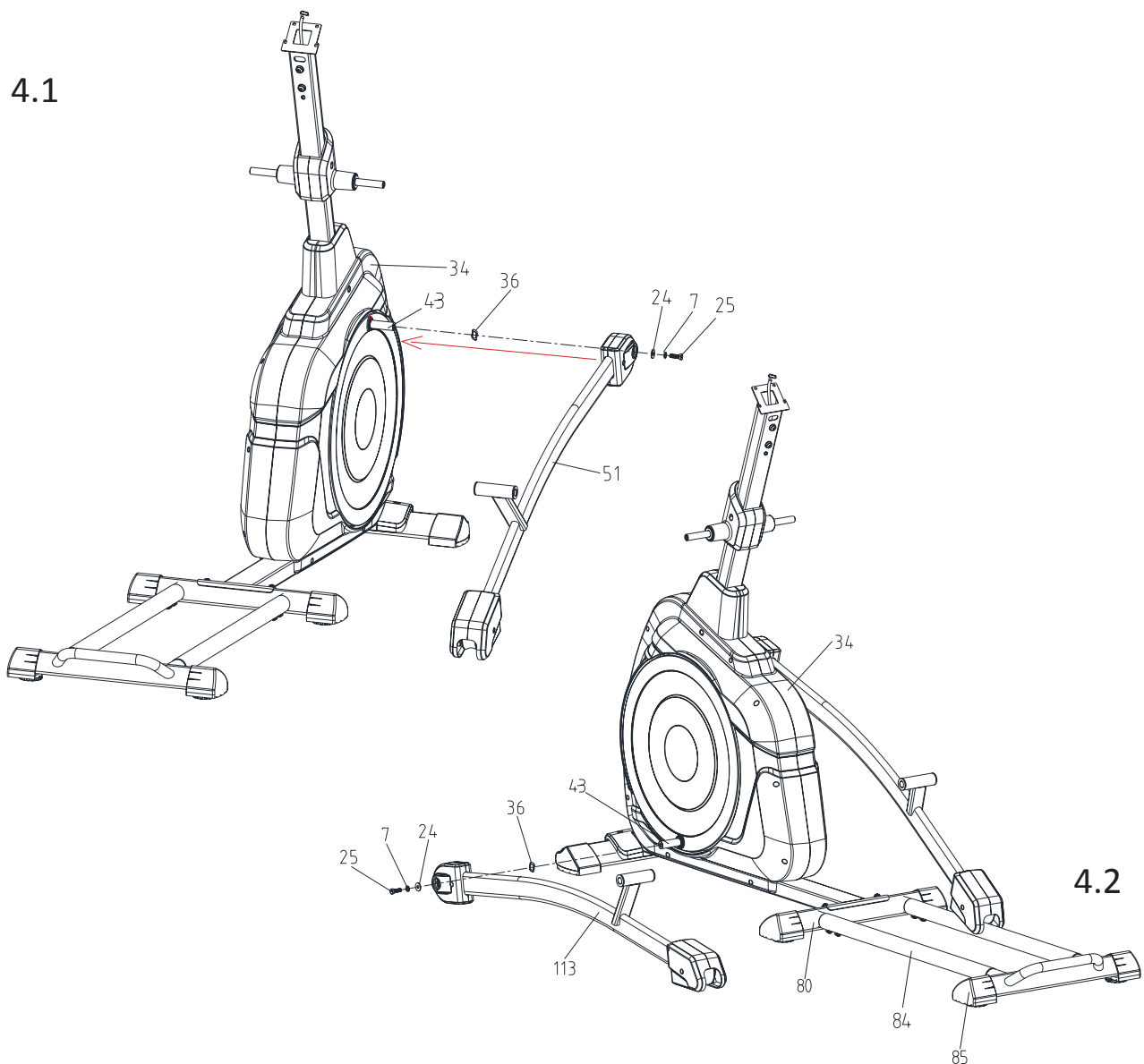


STEP 3

- Slide the Front Post Cover (#32) over the Front Post (#5).
- Connect the Main Frame Cable to the Front Post Cable.
- Connect the Front Post (#5) to the Main Frame (#34) using 4 x M8x20 Bolts (#8) 4 x Flat Washers (#6) and 4 x Wave Washers (#7).
- Secure the Front Post Cover (#32) to the Front Post (#5) using 2 x M8x20 Bolts (#8) 2 x Flat Washers (#6) and 2 x Wave Washers (#7).
- Slide the Axle Shaft (#122) into the Front Post (#5) as shown in the diagram.

ASSEMBLY INSTRUCTIONS

4.1



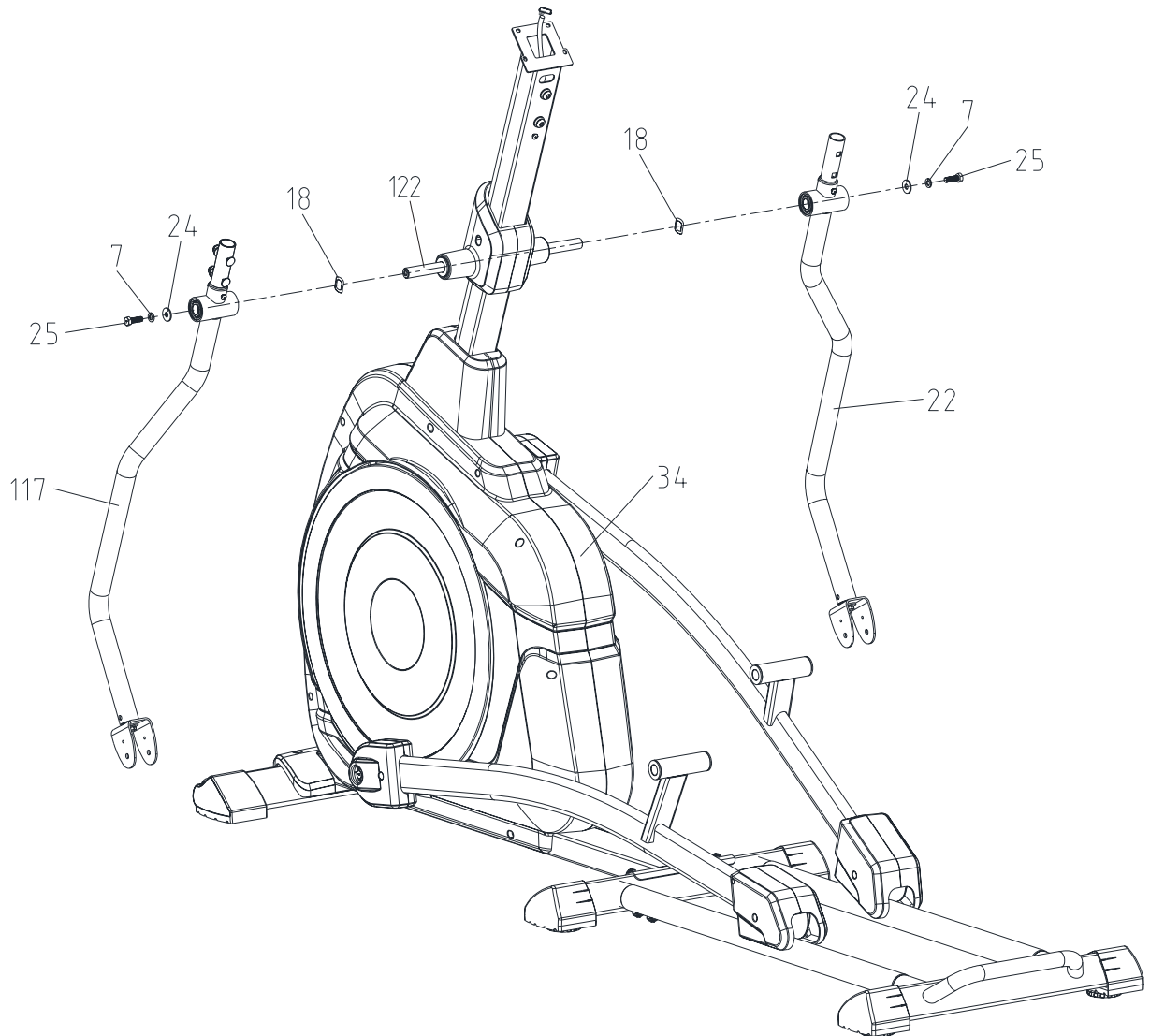
4.2

STEP 4

Please note: Lubricate wheel axle and upper arm axle using a multi purpose grease. Refer to red circles on diagram above.

- Attach the top end of the Right Pedal Arm (#51) to the Crank Arm Axle (#43) on the right hand side of the wheel on the Main Frame (#34) using 1 x M8x20 Bolt (#25), 1 x Wave Washer (#7), 1 x Flat Washer (#24) and 1 x Wave Washer (#36). Refer to Fig 4.1.
- Attach the top end of the Left Pedal Arm (#113) to the Crank Arm Axle (#43) on the left hand side of the wheel on the Main Frame (#34) using 1 x M8x20 Bolt (#25), 1 x Wave Washer (#7), 1 x Flat Washer (#24) and 1 x Wave Washer (#36). Refer to Fig 4.2.
- Attach the bottom end of the Right Pedal Arm (#51) to the right hand side Rail (#84) Between the Middle and Rear Stabiliser (#85).
- Attach the bottom end of the Left Pedal Arm (#113) to the left hand side Rail (#84) Between the Middle (#80) and Rear Stabiliser (#85).

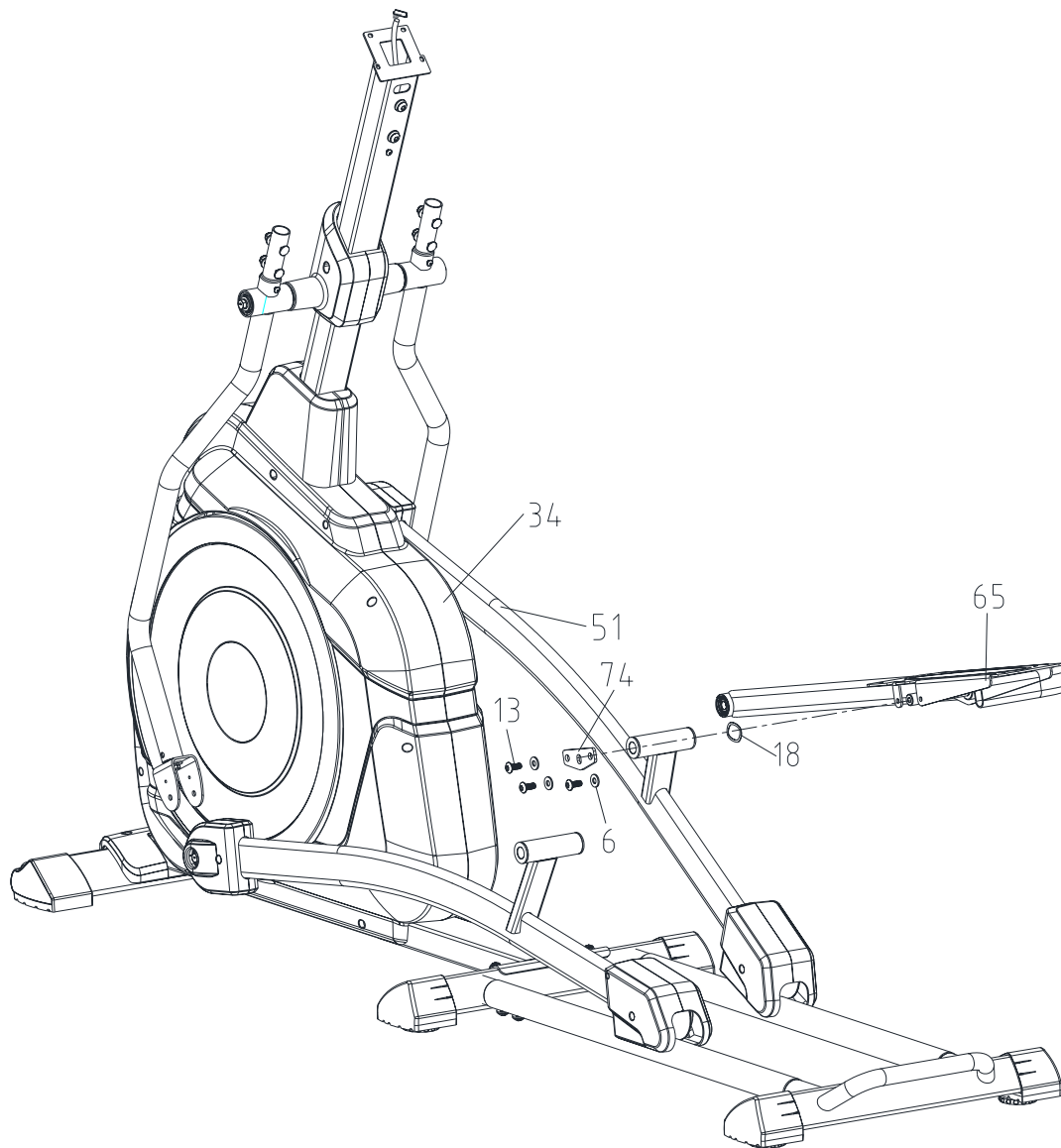
ASSEMBLY INSTRUCTIONS



STEP 5

- Attach the top end of the Lower Handlebar R (#22) to the right hand side of the Axle Shaft (#122) on the Front Post (#5) using 1 x M8x20 Bolt (#25), 1 x Wave Washer (#7), 1 x Flat Washer (#24) and 1 x Wave Washer (#18). Refer to diagram.
- Attach the top end of the Lower Handlebar L (#117) to the left hand side of the Axle Shaft (#122) on the Front Post (#5) using 1 x M8x20 Bolt (#25), 1 x Wave Washer (#7), 1 x Flat Washer (#24) and 1 x Wave Washer (#18). Refer to diagram.

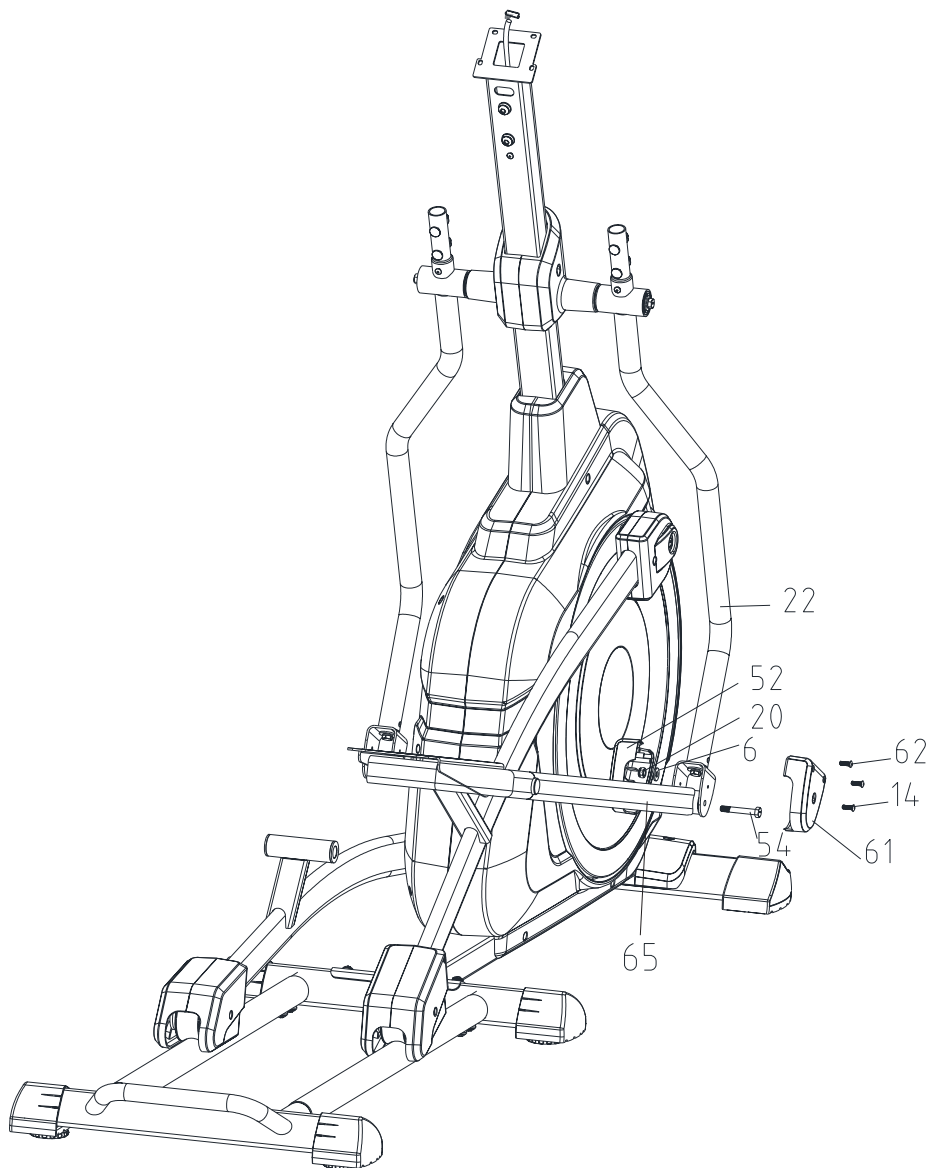
ASSEMBLY INSTRUCTIONS



STEP 6

- Attach the Right Pedal Platform (#65) to the Right Pedal Arm (#51) using a Connection Plate (#74), 1 x Wave Washer (#18), 3 x M8x16 Bolts (#13) and 3 x Flat Washers (#6).

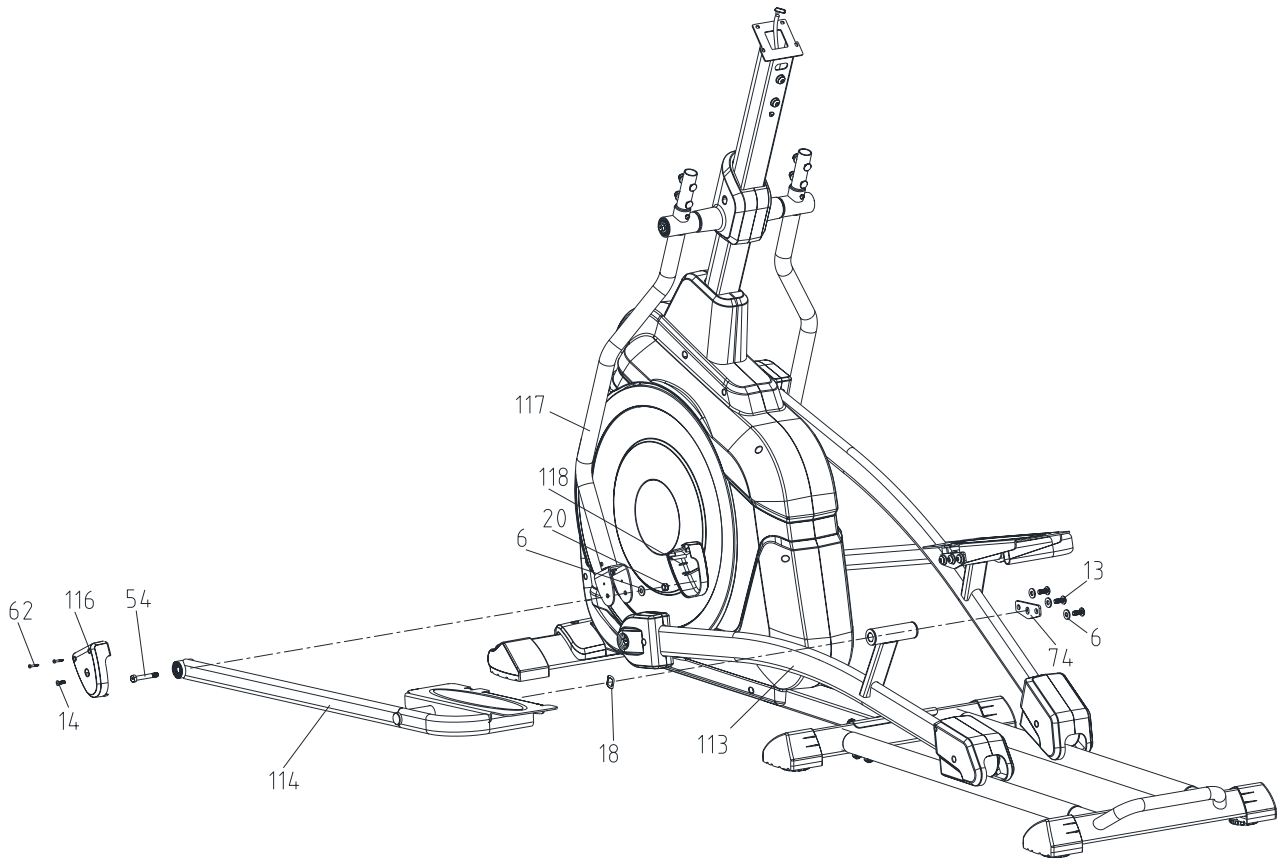
ASSEMBLY INSTRUCTIONS



STEP 7

- Attach the Inside Wheel Cover R (#52) to the right hand side wheel using 2 x Flat Washers (#6) and 2 x M8 Nylon Nuts (#20).
- Attach the bottom end of the Lower Handlebar R (#22) to the front end of the Right Pedal Platform (#65) using a M8x55 Bolt (#52).
- Attach the Outside Wheel Cover R (#61) to the Inside Wheel Cover R (#52). Ensure the Lower Handlebar R (#22) and Right Pedal Platform (#65) joint is inside the two covers. Secure using 1 x M5x10 Screws and 2 x ST2 screws (#62).

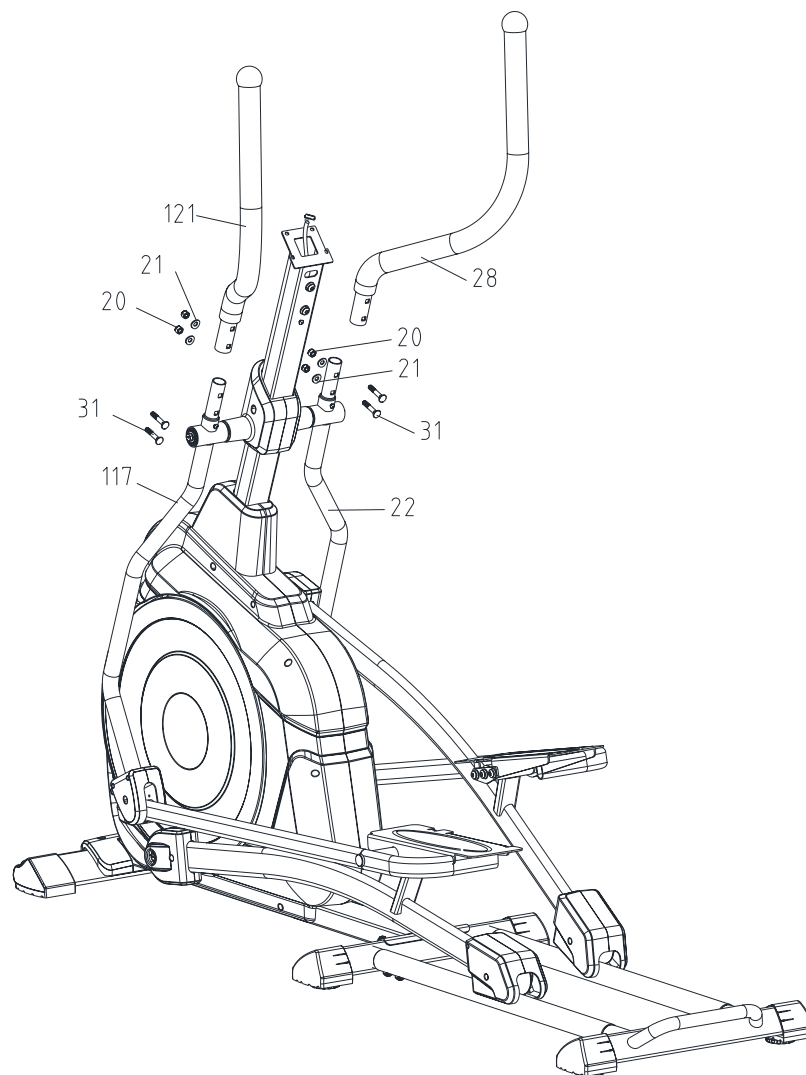
ASSEMBLY INSTRUCTIONS



STEP 8

- Attach the Left Pedal Platform (#114) to the Left Pedal Arm (#113) using a Connection Plate (#74), 1 x Wave Washer (#18), 3 x M8x16 Bolts (#13) and 3 x Flat Washers (#6).
- Attach the Inside Wheel Cover L (#118) to the left hand side wheel using 2 x Flat Washers (#6) and 2 x M8 Nylon Nuts (#20).
- Attach the bottom end of the Lower Handlebar L (#117) to the front end of the Left Pedal Platform (#114) using a M8x55 Bolt (#54).
- Attach the Outside Wheel Cover L (#116) to the Inside Wheel Cover L (#118). Ensure the Lower Handlebar L (#117) and Left Pedal Platform (#114) joint is inside the two covers. Secure using 1 x M5x10 Screws (#14) and 2 x ST2 screws (#62).

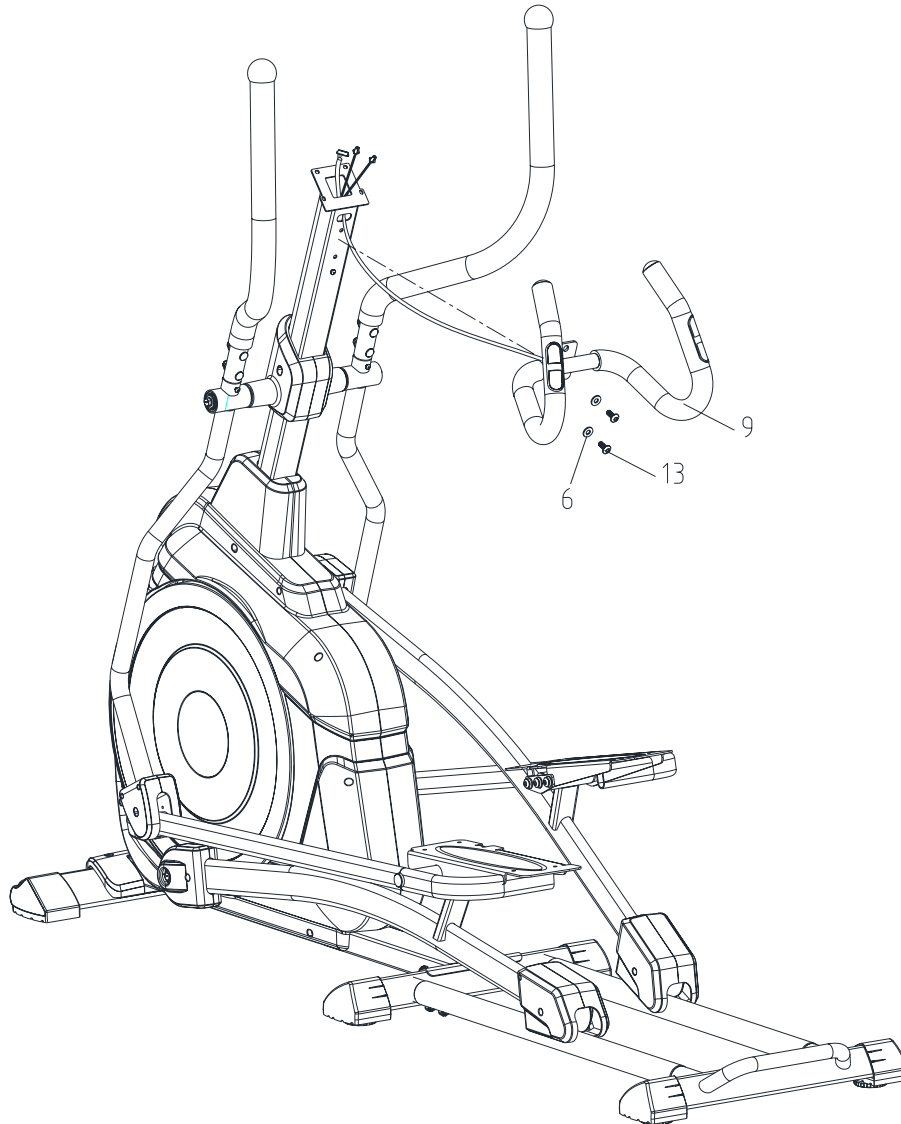
ASSEMBLY INSTRUCTIONS



STEP 9

- Attach the Left (#121) and Right (#28) Upper Handlebars using 4 x Carriage Bolts (#31), 4 x Semi-circle Washers (#21) and 4 x Nylon Nuts (#20). Refer to the diagram above.

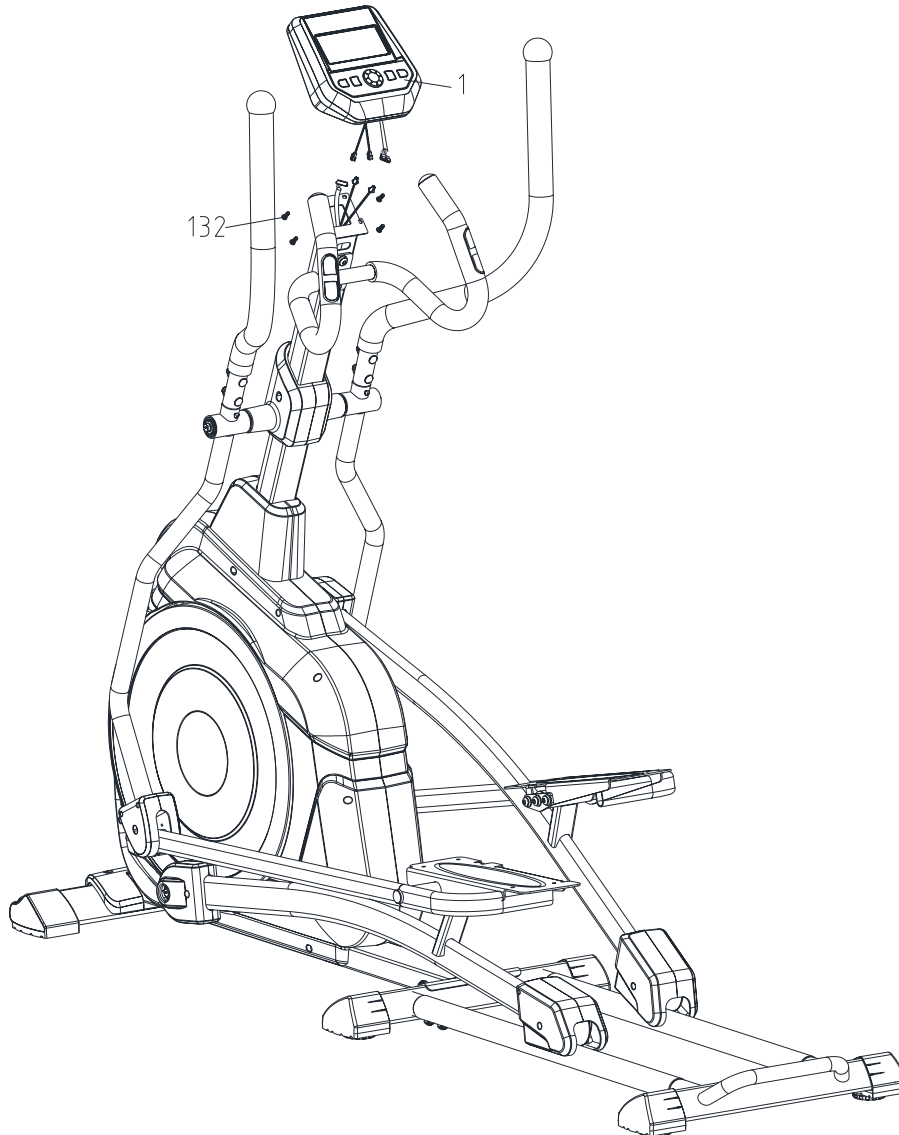
ASSEMBLY INSTRUCTIONS



STEP 10

- Feed the Lower Pulse Wire through the Front Post (#5).
- Attach the Handlebar (#9) to the Front Post (#5). Secure using 2 x M8x16 Bolts (#13) and 2 x Flat Washers (#6). Refer to the above diagram.

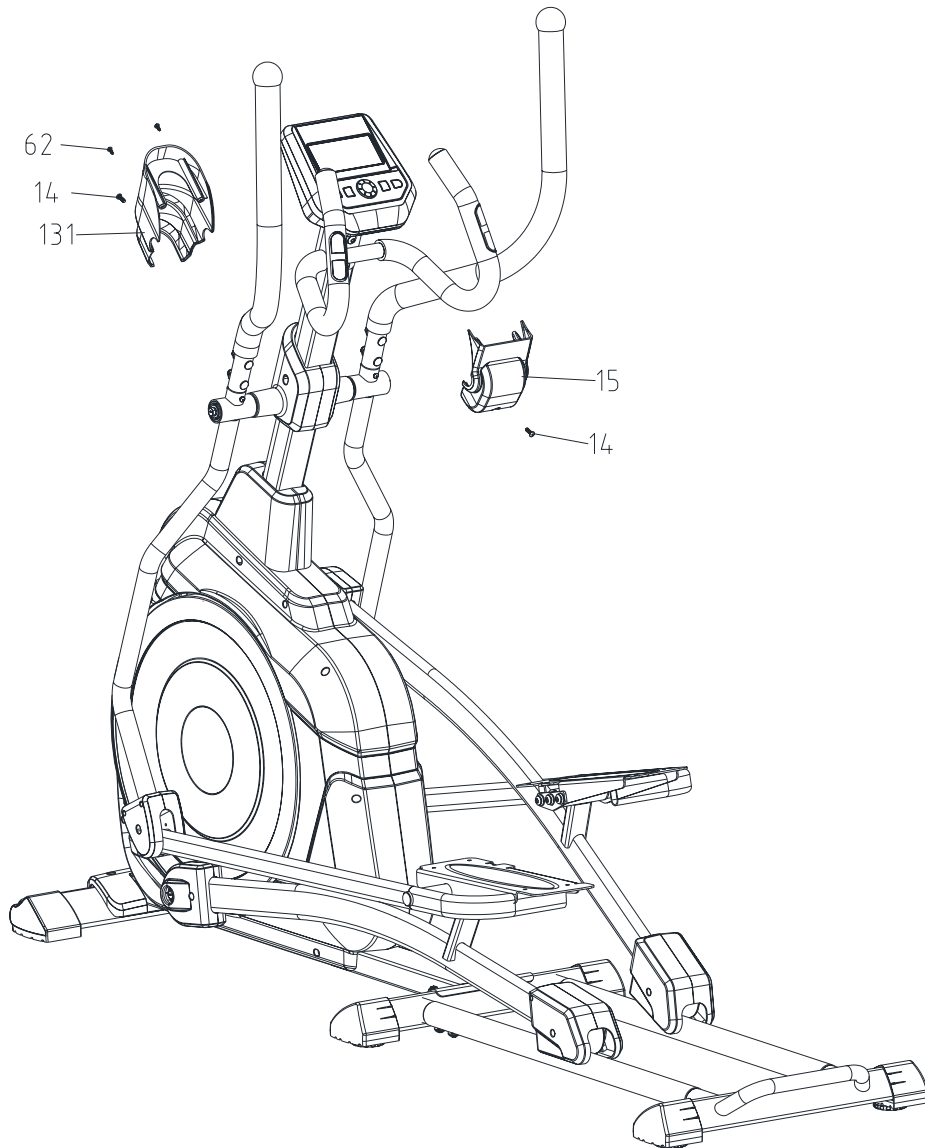
ASSEMBLY INSTRUCTIONS



STEP 11

- Connect Upper Computer Wire from Computer to the Front Post Wire.
- Connect Upper Pulse Wire from Computer to the Lower Pulse Wire from Handlebar.
- Attach Computer (#1) to the Front Post (#5) using 4 x M5x12 Screws (#132). Refer to the above diagram.

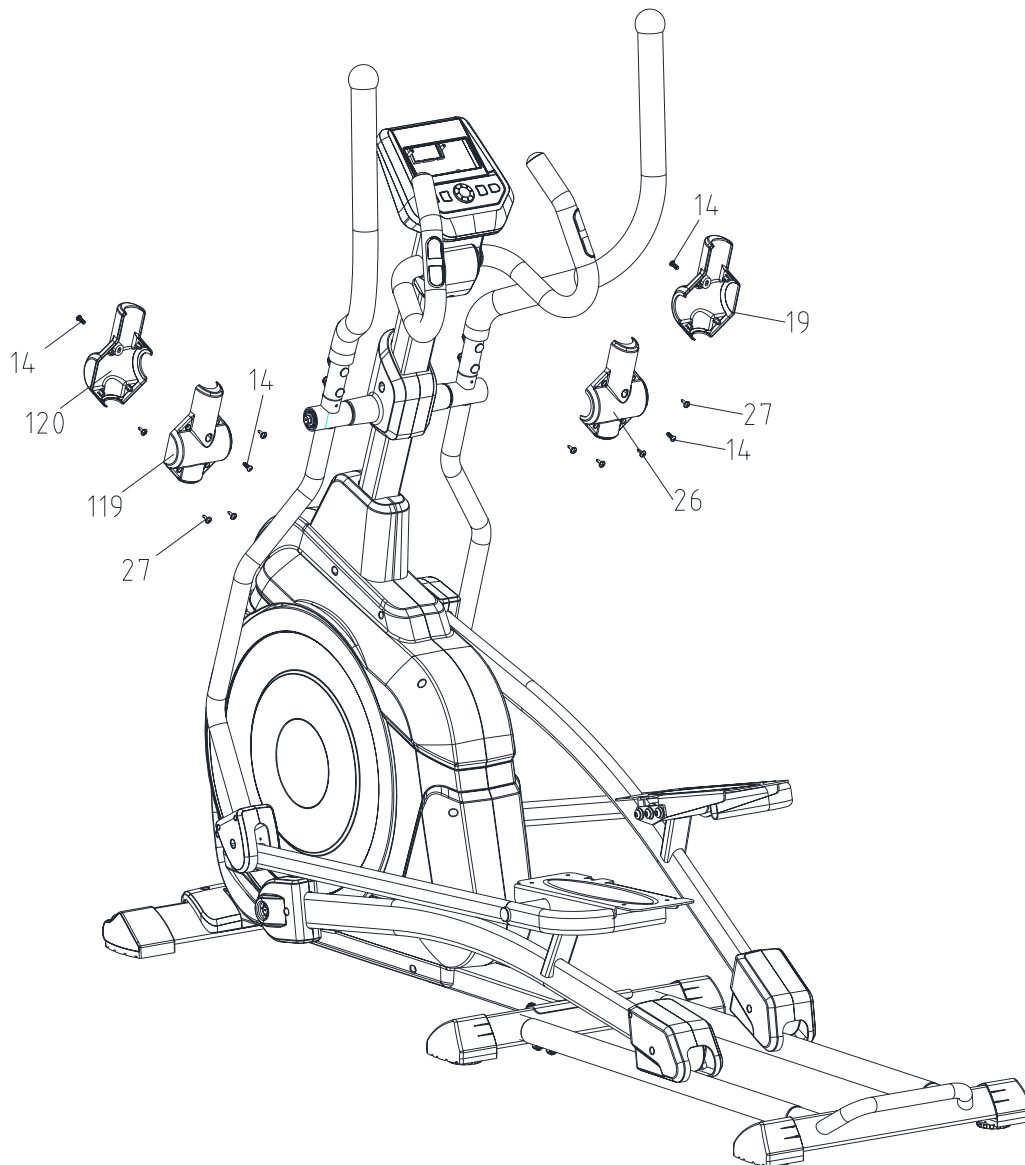
ASSEMBLY INSTRUCTIONS



STEP 12

- Attach the Inner Front Post Cover (#15) to the inner side of the Front Post (#5). Secure using 1 x M5x10 screw (#14).
- Attach the Back Front Post Cover (#131) to the outer side of the Front Post (#5). Secure using 1 x M5x10 screw (#14) and 2 x ST2 screws (#62).

ASSEMBLY INSTRUCTIONS



STEP 13

- Attach the left covers (#119 & 120) to left Lower Handle Bar (#117) using 4 x ST2 screws (#27) and 2 x M5x10 screws (#14).
- Attach the right covers (#19 & 26) to Right Lower Handle Bar (#22) using 4 x ST2 screws (#27) and 2 x M5x10 screws (#14).

ASSEMBLY INSTRUCTIONS

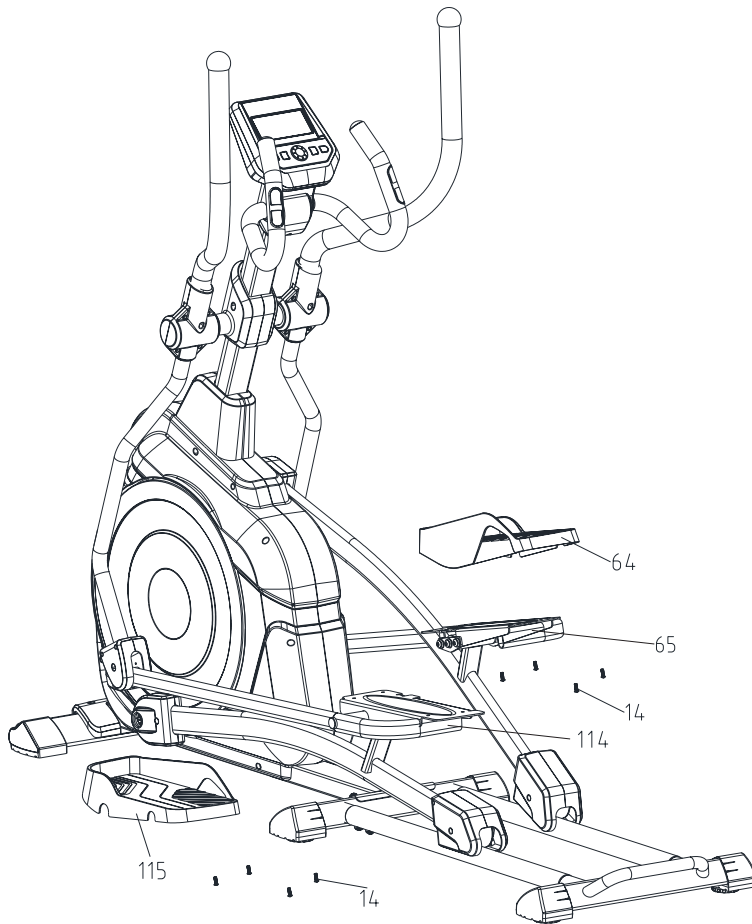


Fig 14.1

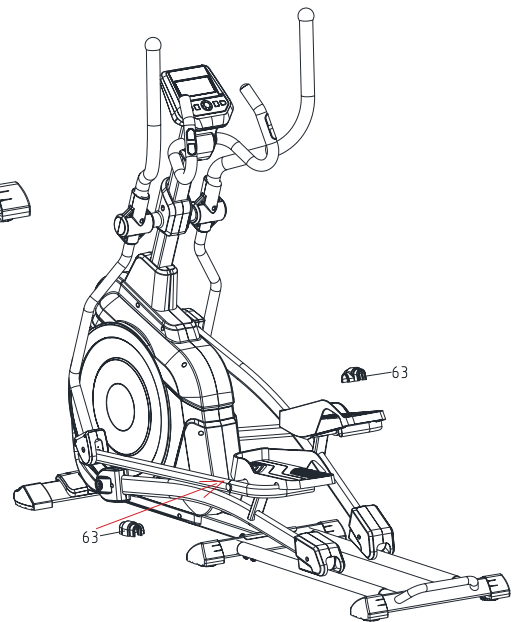


Fig. 14.2

STEP 14

- Attach the left Pedal (#115) to the Left Pedal Platform (#114) using 4 x M5x10 screws (#14).
- Attach the Right Pedal (#64) to the Right Pedal Platform (#65) using 4 x M5x10 screws (#14). Refer to Fig 1
- Clip the Lower Arm Covers (#63) on the left and right lower pedal platform joints. Refer to Fig 2

ASSEMBLY INSTRUCTIONS

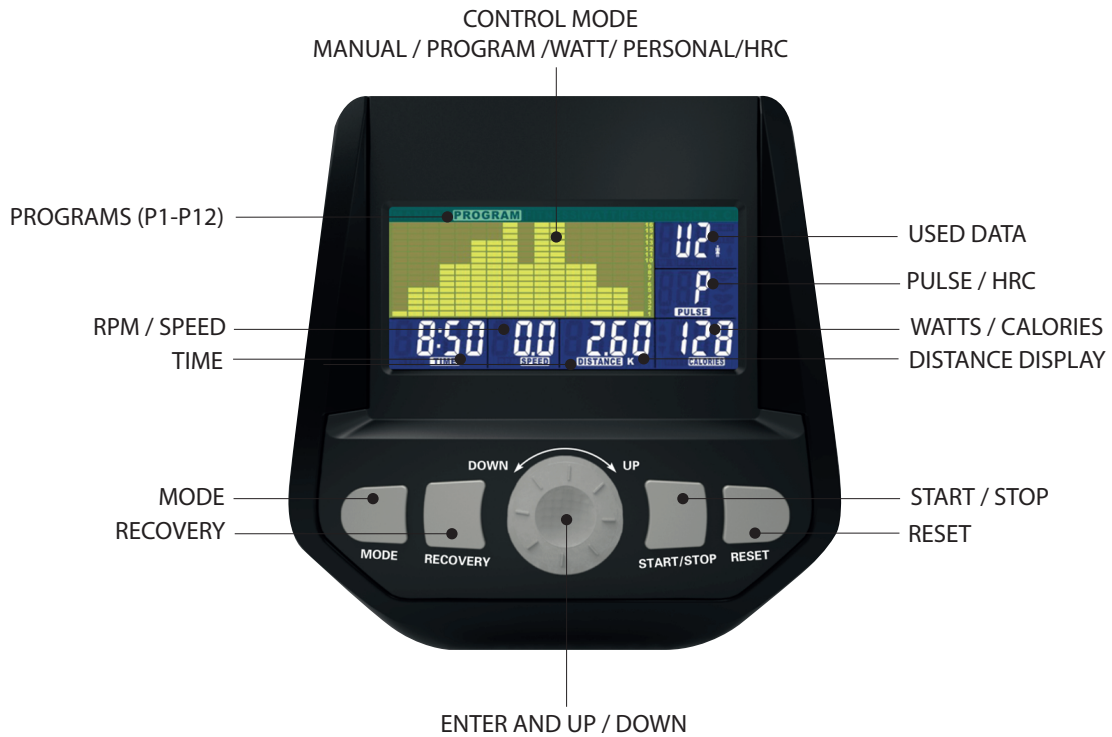
CONGRATULATIONS

Assembly of your **Elite Challenger Elliptical** is now complete! Be sure to fully inspect your machine before using it for the first time.

WARNING

Failure to visually check and test and tech the assembly before use can cause damage to the **Elite Elliptical** and serious injury to users and bystanders and can also compromise the effectiveness of your exercise program.

USER INSTRUCTIONS



SCAN	: Alternates between WATTS/CALORIES and RPM/SPEED. 6 seconds per display.
RPM	: 0-15-999
SPEED	: 0.0-99.9 km/h
TIME	: 0:00-99:59.
DISTANCE	: 0.00-99.99 km
CALORIES	: 0-999.
PULSE	:P-30-240
HEART SYMBOL	: ON / OFF flashes
MANUAL	: 1-24 level
PROGRAM	: P1-P12
PERSONAL	: U1-U4
WATTS CONSTANT	: 10-350
USER DATA	: U0-U4 (U1-U4 memorized user data)

USER INSTRUCTIONS

PRE-SET USER:

Enter user data (sex / age/ height / weight) to accurately calculate workout feedback.

SELECT

User can choose different control modes to start their workout. See below is main description of each control mode.

EXECUTE

Execute selected control mode.

PRE-SET

TIME/DISTANCE/CALORIES/WATTS/HEART RATE

Setting and selecting the users desired function value of the above, the function value display will count down to zero; or if the user does not input any function value, the computer will know your workout is from 0 to end value.

Presetting the desired function value: TIME / DISTANCE / CALORIES / WATTS / PULSE

- A) DISTANCE: The target distance must be preset before executing the DISTANCE function.
- B) MODE MANUAL: Control mode using UP / DOWN button on the screen, the distance value will flash. Set the value by using UP / DOWN and then press MODE to confirm.
- C) Complete the DST setting and store the desired data by holding down the MODE button for 6 seconds until it changes to the normal display.
- D) The symbol "DST" will appear, meaning that the DST will count down.
- E) The computer will automatically begin count-down function value upon riding. No further action is required.
- F) RESET the computer in order to release the latching status. This also resets all other data.

PRESS ENTER/UP/DOWN/START/PAUSE

Use UP / DOWN key to increase / decrease function value, mode or program.

After setting each function value to press "MODE" to confirm your setting.

START / STOP - Finish setting FUNCTION VALUE then press START to start operating; user can press "STOP" if he/her want to pause their workout.

TEST RECOVERY

Press RECOVERY, the computer will calculate your recovery value and will display the results. This uses your preset data and actual workout function value.

CONTROL MODE DESCRIPTION

- MANUAL: Set the resistance level using the dot matrix display then (if required) set exercise parameters TIME/DISTANCE / CALORIES / PULSE then press START/STOP to START.
- PROGRAM: 12 automatic adjusting programs with control exercise (P1~P12), resistance level can be adjusted during PROGRAM DIAGRAM is flashing.

- **WATTS CONSTANT:** User can default WATTS value to their desired value between 10-350 watts by using the UP/ DOWN button. To fix WATTS constant value press START/STOP key. Use WATTS control mode to train yourself in different WATTS's constant.
- **USER PROGRAM:** Create your own Program profile through U1-U4 by setting the resistance level for each individual segment. Then the Program will be automatically saved for future use. U0 ENTER can be set the same as U1-U4 but this Program cannot be saved.
- **HEART RATE CONTROL:** Select your target Heart Rate from one of the preset programs 55%, 75% or 90%. Enter your age into the User Data to ensure that your target heart rate is set correctly. The PULSE display will flash when you have reached your target heart rate according to the Program you have chosen.
 1. 55% -- DIET PROGRAM
 2. 75% -- HEALTH PROGRAM
 3. 90% -- SPORTS PROGRAM
 4. TARGET—USER SET TARGET HEART RATE

RANDOM PORGRAM

- If the user is tired of using the preset program chart, he/she can choose “RANDOM”. The computer will auto-produce a new program chart by randomly selecting data. This function offers over 100 program charts.

RECOVERY

- Once you have finished your workout, press RECOVERY. For the RECOVERY function to work correctly, it will need your Heart Rate input. TIME will count down 1 minute and then your fitness level from F1 to F6 will be displayed.
- **NOTE:** during RECOVERY, no other functions will be displayed.

Condition	Score	Heart Rate
Excellent	F1	Above 50
Good	F2	40 ~ 49
Average	F3	30 ~ 39
Fair	F4	20 ~ 29
Poor	F5	10 ~ 19
Very Poor	F6	Under 10

CARE AND MAINTENANCE

WARNING

Before cleaning or carrying out any maintenance on your elliptical, ensure the power is turned off and the power cord removed from the plug socket.

Prolong the life of your elliptical by performing periodic maintenance checks. Not only does this ensure your machine is in full working order to ensure they continue to run smoothly and reliably, but it will save you service costs in the long run.

Cleaning

General cleaning of the unit after use will protect the ellipticals powder-coated framework and prevent unnecessary corrosion stains and damage to the structural components from sweat and perspiration. During this time check for any cracks and damage.

Pivot points

No matter what style of elliptical trainer you have there will be areas where the arms and legs rotate on an axle or bolt. These pivot points need to be tightened enough so there is still movement in the desired direction of travel but no sideways movement.

Excessive sideways movement causes knocking noises and extra wear. Crosstrainers with a sealed bearing on the axle do not require greasing however units with a plastic or brass bushing should be greased twice a year with general purpose automotive grease between the axle and bush. This ensures that the moving parts are not rubbing directly on one another and causing wear.

Joins in frame

Areas where the frame is bolted together (e.g. the upright mast to the base or the stabiliser legs to the base) need to be kept really tight. Any movement in these areas can cause knocking or squeaking noises during use. It pays to check once every couple of months that things haven't loosened off. Using a thread-locking compound is encouraged but it's still not a permanent solution, checking on a regular basis is the best bet to keep your machine running as best it possibly can.

LIMITED WARRANTY

Warranty Range

Damage in correct maintenance and normal operations (not factitious factors). Warranty card to the original purchaser, shall not be transferred.

Warranty Time

HOME USE

- 10 Year Frame
- 1 Year Parts and Labour
- ALL WARRANTIES BACK-TO-BASE*
- *Return to your nearest Elite Fitness Service Center.

The following conditions are not under warranty range:

- A) As a result of abuse, neglect, accident, or unauthorized modification;
- B) The damage due to incorrect adjustment of the machine;

The Elliptical should not be:

- A) Plugged into a multi-board plug device. The elliptical requires a dedicated power circuit and should be plugged directly into the wall socket.
- B) Used with an extension cord any longer than 1.5m.

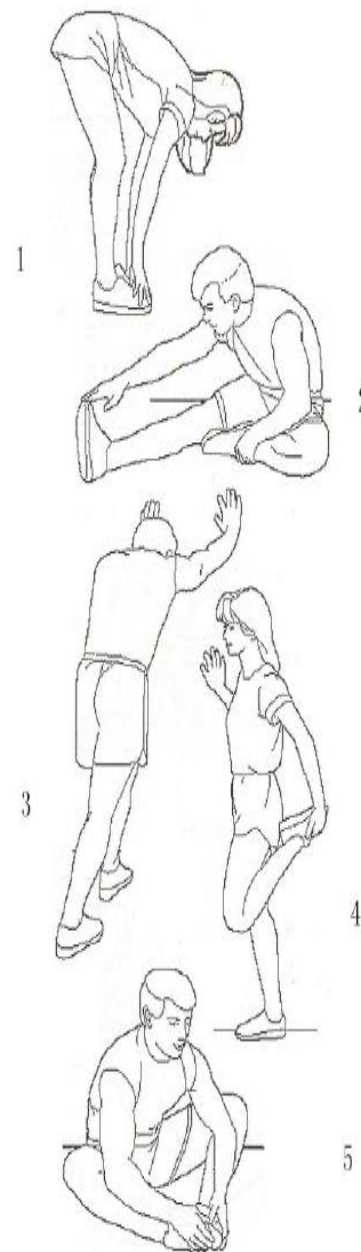
Repair and Maintenance Service

Please contact our Elite Fitness Service Department at eliteservice@elitefitness.co.nz or visit www.elitefitness.co.nz for any service related issues or advice on preventative maintenance servicing procedures.

WARM-UP EXERCISE

Warm up exercise is important in preparing the muscles for activity whilst minimising the risk of injury. You may choose to warm up with a light/brisk walking pace for 5-10 minutes before stopping and performing some simple stretches. (As shown in the pictures below)

- Hamstring Stretch (Standing) Keep your knees slightly bent and slowly lean forward, back and shoulders relaxed, reaching towards your toes. You should feel the tension and slight discomfort in your hamstring muscles. Hold for 15-20 seconds. Repeat 2-3 times.
- Hamstrings Stretches (Seated) Sitting on the floor preferably on a mat, put one leg straight, the other inward and close to the inside of the straight leg. Lean forward from the hips, reaching towards your toes. Hold for 10-15 seconds, and relax. Repeat 3 times for each leg (See picture 2).
- Crus and Feet Tendon Stretches Standing with two hands on the wall or tree, one leg behind. Keeping your legs straight and the heel on the ground, lean forward towards the wall or tree. Hold for 10-15 seconds, and relax. Repeat 3 times for each leg (See picture 3).
- Quadriceps Stretches Keeping your balance with your left hand holding onto a wall or stationery fixture, grasp your right foot with your right hand and stretch your right heel toward your buttocks slowly, until you feel the stretch in the front of your thigh. Hold for 10-15 seconds, and relax. Repeat 3 times for each leg (See picture 4).
- Sartorius (Inner Muscles of the Thigh) Muscle
- Stretches Sitting down with the soles of your feet or shoes together and your knees positioned outward. Pull your feet towards your groin until you can feel the stretch. Hold for 10-15 seconds, and relax. Repeat 3 times (See picture 5).



TRAINING STAGES

		Exercise Zone									
		AGE									
Beats Per Minute	100%	200	195	190	185	180	175	170	165	155	150
	VO2 Max (Maximum Effort)										
	90%	180	176	171	167	162	158	153	149	140	135
	Anaerobic (Hardcore Training)										
	80%	160	156	152	148	144	140	136	132	124	120
	Aerobic (Cardio Training/Endurance)										
	70%	140	137	133	130	126	123	119	116	109	105
	Weight Control (Fitness/Fat Burn)										
	60%	120	117	114	111	108	105	102	99	93	90
	Moderate Activity (Maintenance/Warm up)										
50%	100	98	95	93	90	88	85	83	78	75	

Cardiovascular training plays an important part in maintaining a healthy heart and lung function, so it's no surprise we should be paying attention to how quickly our heart beats during exercise. The chart above outlines a range of heart rate training zones determined by the individual's age and workout goals to ensure you train safely and effectively.

Heart Rate can be measured by using the radial (wrist) or carotid (neck) pulse using your index and middle fingers, counting the beats for 10 seconds and multiplying by 6. Alternatively, the use of a Wireless Telemetry Heart Rate strap and watch will give you an accurate Beats Per Minute (BPM) reading.

$220 - \text{AGE} = \text{TMHR}$ (Theoretical Maximum Heart Rate)

$\text{TMHR} \times 85\% =$ (Upper Training Limit) bpm (Beats per Minute)

$\text{TMHR} \times 65\% =$ (Lower Training Limit) bpm

Note: Contact heart rate may provide inaccurate readings and is designed only as a guide

Example: $220 - 39 = 181$ bpm

$181 \times 85\% (0.85) = 154$ bpm (Upper Training Limit)

$181 \times 65\% (0.65) = 118$ bpm (Lower Training Limit)

PARTS LIST

We recommend 2 people assist in assembling this unit. Place all parts of the elliptical in a cleared area and remove the packing materials. Do not dispose of the packing materials until assembly is completed. Before you start installation, inspect and prepare all parts and screws featured in this manual. When you open the carton, you will find the following parts:

PART NO.	DESCRIPTION	Q'TY
1	Computer	1
2	Cable	1
3	Handle pulse wire	2
4	Foam STR	2
5	Front Post Q235	1
6	Flat washer Q235 $\Phi 8.5 \times \Phi 9 \times 2T$	23
7	Wave washer Q235 $\Phi 8.5 \times \Phi 13.5 \times 2.5T$	14
8	Bolt Q235 M8*20	14
9	Handlebar Q235 $\Phi 25.4$	1
10	End cap STR	2
11	Screw Q235 ST2.9*20	2
12	Handle pulse ABS 12B	2
13	Bolt Q235 M8*16	16
14	Screw Q235 M5*10	28
15	Inner Front Post Cover	1
16	Sleeve POM	2
17	Cover ABS	1
18	Wave washer 65Mn $\Phi 17.5 \times \Phi 25 \times 0.3T$	4
19	Cover ABS	1
20	Nylon nut Q235+PA M8	10
21	Semi-circle washer Q235 $\Phi 8.5 \times \Phi 9 \times 2T$	12
22	Lower Handlebar R Q235	1
23	Bearing gcr15 6003	8
24	Flat washer Q235 $\Phi 8.5 \times \Phi 25T$	6
25	Bolt Q235 8*20	4
26	Cover ABS	1
27	Screw Q235 ST2.9*8	8
28	Upper Handlebar R	1
29	End cap PP	2
30	Foam STR	2
31	Carriage bolts Q235 M8*40	4
32	Front Post Cover	1
33	Cable	1
34	Main Frame Q235	1
35	Bearing gcr15 6004	2
36	Wave washer 65Mn $\Phi 20.5 \times \Phi 30 \times 0.3T$	3
37	Flat washer Q235 $\Phi 20.3 \times \Phi 30 \times 0.5T$	1

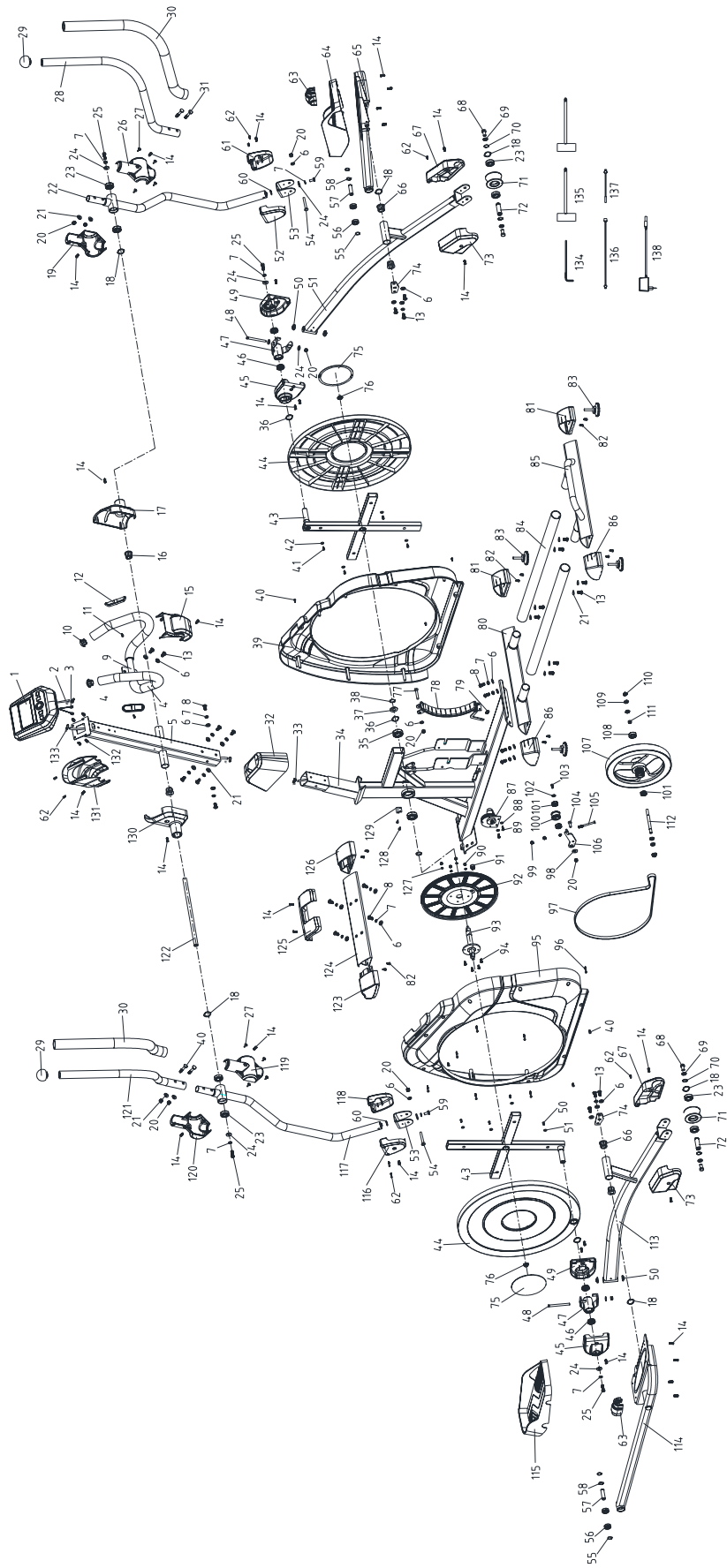
PART NO.	DESCRIPTION	Q'TY
38	C-clip 65Mn $\Phi 18.5 \times \Phi 22.5 \times 1T$	2
39	Cover ABS	1
40	Screw Q235 3/16" * 3/4"	6
41	Screw Q235 ST3.9*16	8
42	Flat washer Q235 $\Phi 4.5 \times \Phi 16 \times 1.5T$	8
43	Crank Arm Axle Q235	2
44	Turntable ABS	2
45	Cover ABS	2
46	Bearing gcr15 6804	4
47	Cardan joint Q235	1
48	Screw Q235 M8*88	2
49	Cover Q235 $\Phi 34$	1
50	Bearing 6203	1
51	Right Pedal Arm	4
52	Inside Wheel Cover R	1
53	U-seat Q235	2
54	Bolt Q235 M8*55	2
55	C-clip 65Mn $\Phi 12.5 \times \Phi 18 \times 0.5T$	4
56	Bearing gcr15 6001	4
57	Sleeve Q235 $\Phi 8.1 \times \Phi 12 \times 39L$	2
58	Wave washer 65Mn $\Phi 12.5 \times \Phi 18 \times 0.5T$	2
59	Screw Q235 M8*25	2
60	Gasket $\Phi 22 \times \Phi 14.2 \times 1.1T$	4
61	Outside Wheel Cover R	1
62	Screw Q235 ST2.9*30	8
63	Cover ABS	2
64	Pedal-R PP	1
65	Right Pedal Platform	1
66	Sleeve POM	2
67	Cover ABS	2
68	Screw Q235 M10*20	4
69	Flat washer Q235 $\Phi 10 \times \Phi 20 \times 2T$	4
70	C-clip 65Mn $\Phi 17.5$	4
71	Wheel PU	2
72	Axle 45 $\Phi 17 \times 55.5$	2
73	Cover ABS	2
74	Connection Plate Q235	2

PARTS LIST

PART NO.	DESCRIPTION	Q'TY
75	Cover ABS	2
76	Nut Q235 M10*P1.25*10T	2
77	Screw Q235 M8*55L	1
78	Magnet set Q235	1
79	Spring 65Mn $\phi 1 * \phi 8.5 * 48L$	1
80	Middle stabiliser Q235	1
81	End cap ABS	2
82	Screw Q235 ST3.9*1.4*20L	12
83	End cap	4
84	Rail Q235 $\phi 40$	2
85	Rear stabiliser Q235	1
86	End cap ABS	2
87	Gear case	1
88	Flat washer Q235 $\phi 5.5 * \phi 12 * 2T$	2
89	Screw Q235 M5*12L	2
90	Nylon nut Q235+PA	4
91	Magnet	1
92	Belt pulley PA6	1
93	Axis 40Cr $\phi 20$	1
94	Screw Q235 M6*P1.0*14	4
95	Cover ABS	1
96	Screw Q235 ST3.9*50L	7
97	Belt	1
98	Flat washer $\phi 8.5 * \phi 25 * 0.5T$	1
99	Nut Q235 M6	2
100	Idle wheel PA6	1
101	Bearing gcr15 6000	3
102	Flat washer Q235 $\phi 6.5 * \phi 13 * 1.5T$	1
103	Screw Q235 M6*10L	1
104	Screw Q235 M8*P1.25*25L	1
105	Screw Q235 M6*50	1
106	Idle pole Q235	1

PART NO.	DESCRIPTION	Q'TY
107	Flywheel HT200 $\phi 280$	1
108	Bearing gcr15 6300	1
109	Sleeve PA6 $\phi 10 * 6mm$	1
110	Nut Q235 3/8"-26*10T	2
111	Nut Q235 3/8"-26*10T	2
112	Axle 45 3/8"-26*126L	1
113	Left Pedal Arm Q235	1
114	Left Pedal Platform Q235	1
115	Pedal-L PP	1
116	Outside Wheel Cover L	1
117	Lower Handlebar L Q235	1
118	Inside Wheel Cover L	1
119	Cover ABS	1
120	Cover ABS	1
121	Upper Handlebar L	1
122	Axle Shaft $\phi 17 * 350.4L$	1
123	End cap ABS	1
124	Front stabiliser Q235	1
125	Front Stabiliser Cover	1
126	End cap ABS	1
127	Wave washer 65Mn $\phi 6.1 * 1.6T$	4
128	Screw Q235 ST3.5*16	2
129	Permanent seat PP	1
130	Cover ABS	1
131	Back Front Post Cover	1
132	Screw Q235 M5*12	4
133	Cable	1
134	Hex spanner Q235	1
135	Socket spanner Q235	2
136	DC wire	1
137	Cable	1
138	Adaptor	1

EXPLODED DRAWING





For more information about our Elite exercise equipment or other brands that we stock for your home, visit www.elitefitness.co.nz

Copyright © 2015 Elite Fitness

Elite Fitness, 11 George Bourke Drive, Mt Wellington, Auckland, New Zealand,
0800 243 834, www.elitefitness.co.nz

Keep up to date with the latest products, competitions and equipment, follow us on our social media sites.

